



**Modelling and forecasting
tropical deforestation:
advances and perspectives**



ec.europa.eu/jrc



Joint Research Centre
the European Commission's
in-house science service

Modelling and forecasting tropical deforestation: advances and perspectives



Ghislain Vieilledent^{1,2}

[1] JRC D.1 Bio-economy unit, [2] Seconded National Expert from **Cirad**

1 Deforestation and demography in Africa

- Model
- Results
- Valorisation

2 `forestatrisk` Python module

- Functionalities
- Improvements
- Model performance

3 Forecasting spatial deforestation spatially

- Pantropical scale
- Computational challenge
- Scenario choice

4 Perspectives

1 Deforestation and demography in Africa

- Model
- Results
- Valorisation

2 `forestatrisk` Python module

- Functionalities
- Improvements
- Model performance

3 Forecasting spatial deforestation spatially

- Pantropical scale
- Computational challenge
- Scenario choice

4 Perspectives

1 Deforestation and demography in Africa

- Model
- Results
- Valorisation

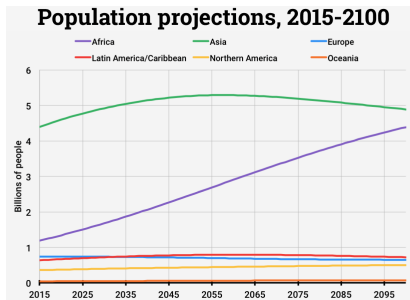
2 `forestatrisk` Python module

- Functionalities
- Improvements
- Model performance

- 3 Forecasting spatial deforestation spatially
 - Pantropical scale
 - Computational challenge
 - Scenario choice
- 4 Perspectives

Model

- The fate of African tropical forests
- Associated to demographic explosion
- Data on deforestation :
 1. JRC : 1990-2000-2010
 2. GFC :
2000-2005-2010-2015
- $\log D = \beta_0 + \beta_1 \log F + \beta_2 \log P$
- Projection of forest cover in 2050, 2100



1 Deforestation and demography in Africa

- Model
- **Results**
- Valorisation

2 `forestatrisk` Python module

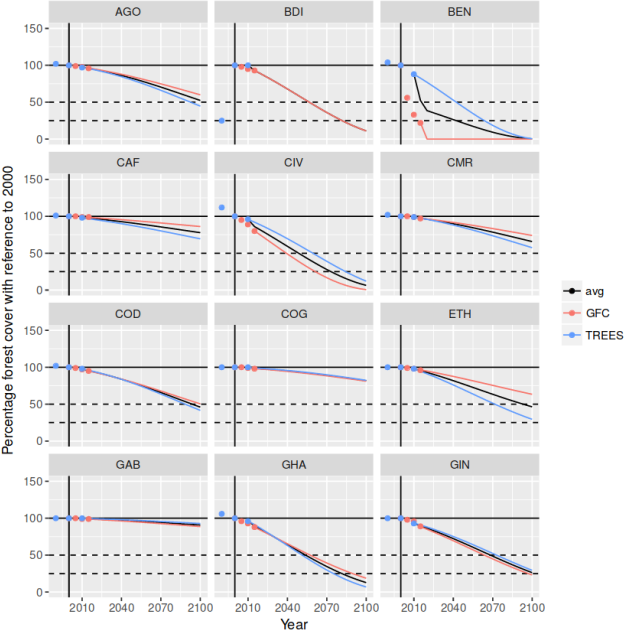
- Functionalities
- Improvements
- Model performance

3 Forecasting spatial deforestation spatially

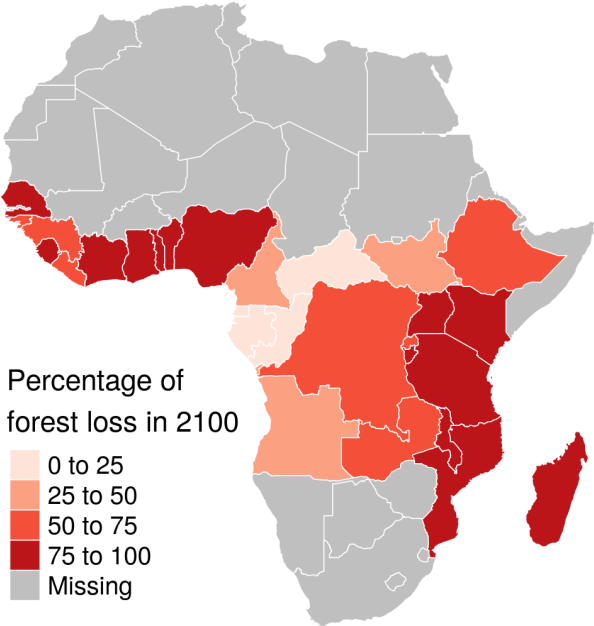
- Pantropical scale
- Computational challenge
- Scenario choice

4 Perspectives

Model averaging per country



Percentage of forest loss 21st century



1 Deforestation and demography in Africa

- Model
- Results
- **Valorisation**

2 `forestatrisk` Python module

- Functionalities
- Improvements
- Model performance

- 3 Forecasting spatial deforestation spatially
 - Pantropical scale
 - Computational challenge
 - Scenario choice
- 4 Perspectives

Valorisation

- Scientific article
- Integration of Roadless data on deforestation ?
- Use of the results for future deforestation scenario in Africa
- Predictions in percentage of forest loss : \sim independent of forest definition

- 1 Deforestation and demography in Africa
 - Model
 - Results
 - Valorisation
- 2 **forestatrisk** Python module
 - Functionalities
 - Improvements
 - Model performance

- 3 Forecasting spatial deforestation spatially
 - Pantropical scale
 - Computational challenge
 - Scenario choice
- 4 Perspectives

1 Deforestation and demography
in Africa

- Model
- Results
- Valorisation

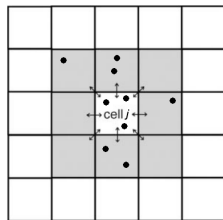
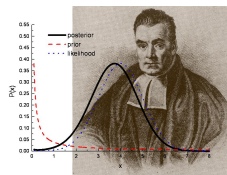
2 **forestatrisk** Python module

- **Functionalities**
- Improvements
- Model performance

- 3 Forecasting spatial
deforestation spatially
- Pantropical scale
 - Computational challenge
 - Scenario choice
- 4 Perspectives

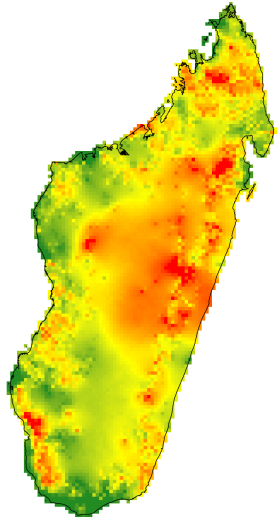
forestatrisk Python module functionalities

- Spatial probability of deforestation
- $\text{logit}(\theta_i) = f(\text{spatial factors}_i) + \rho_j$
- Factors : accessibility (dist. towns, roads, villages), landscape (dist. forest edge), land-tenure (protected areas)
- ρ_j : spatial random effect
- <https://github.com/ghislainv/forestatrisk>



Spatial random effects

- Hotspots of deforestation
- Not explained by the fixed env. factors



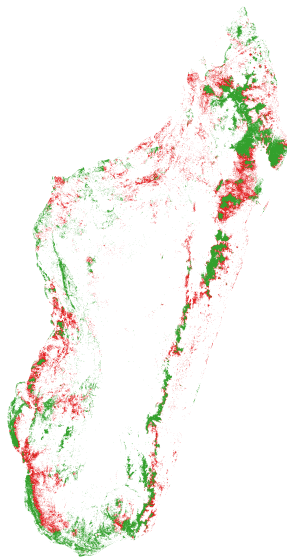
Spatial probability of deforestation

- Computed at 30 m resolution
- Greener : lower probability
- Darker red : higher probability



Future forest cover

- **Green** : residual forest in 2050
- **Red** : deforested area 2010-2050



1 Deforestation and demography
in Africa

- Model
- Results
- Valorisation

2 **forestatrisk** Python module

- Functionalities
- **Improvements**
- Model performance

- 3 Forecasting spatial
deforestation spatially
- Pantropical scale
 - Computational challenge
 - Scenario choice
- 4 Perspectives

Improvements

- Python 2.7 and Python 3.x compatible
- Spatial random effects limited to country border
- Set of new functions for model validation
- Can be used from R with `reticulate`



1 Deforestation and demography in Africa

- Model
- Results
- Valorisation

2 **forestatrisk** Python module

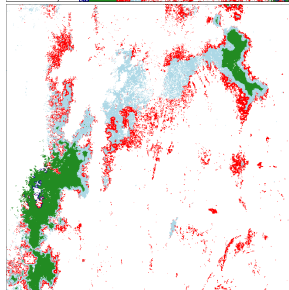
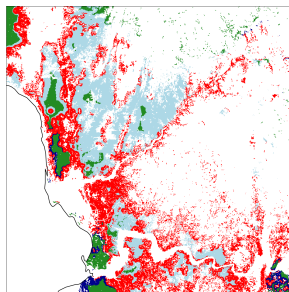
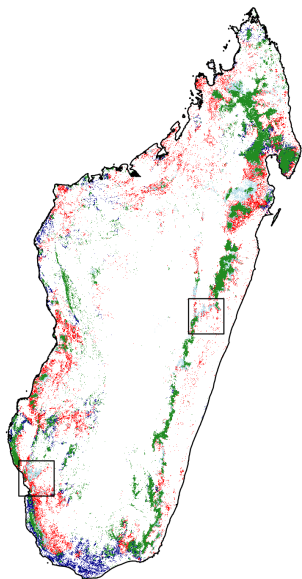
- Functionalities
- Improvements
- **Model performance**

3 Forecasting spatial deforestation spatially

- Pantropical scale
- Computational challenge
- Scenario choice

4 Perspectives

Comparing predictions with GLM



Model performance

Performance estimated on an independent data-set of 20,000 points

model	Deviance	OA	Kappa
null	0	50	0
GLM	8	62	24
iCAR	30	79	58
full	100	100	100

Model validation

- Map of probability of deforestation in 2010 + known deforested area on 2010-2014
- Observed vs. projected deforestation on 2010-2014
- Area deforested in 10×10 km areas
- Pearson's correlation

model	Cor
GLM	12
iCAR	31

- 1 Deforestation and demography in Africa
 - Model
 - Results
 - Valorisation
- 2 `forestatrisk` Python module
 - Functionalities
 - Improvements
 - Model performance

- 3 Forecasting spatial deforestation spatially
 - Pantropical scale
 - Computational challenge
 - Scenario choice
- 4 Perspectives

1 Deforestation and demography in Africa

- Model
- Results
- Valorisation

2 forestatrisk Python module

- Functionalities
- Improvements
- Model performance

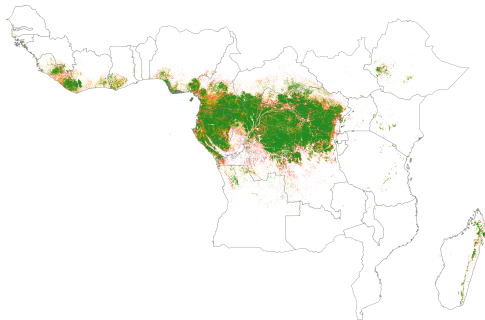
3 Forecasting spatial deforestation spatially

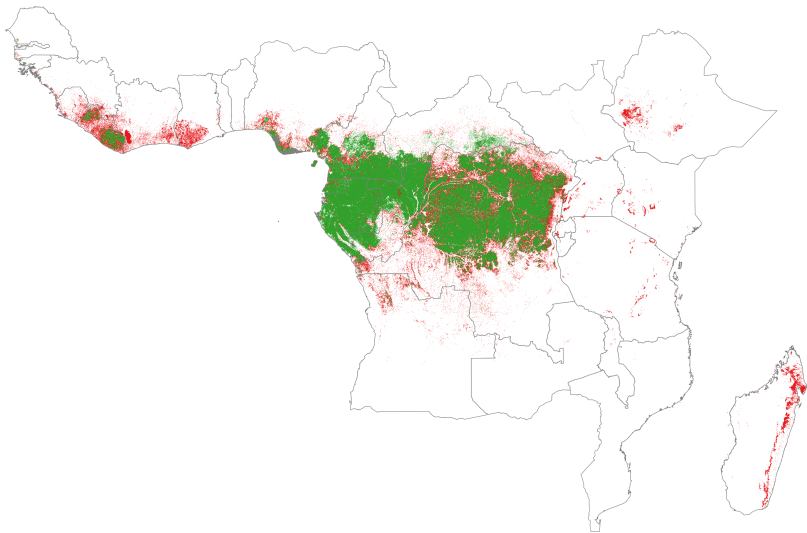
- **Pantropical scale**
- Computational challenge
- Scenario choice

4 Perspectives

Africa

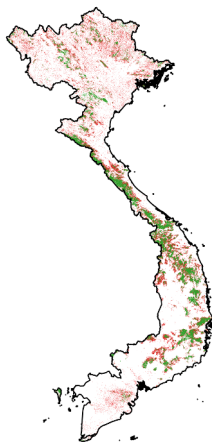
- Map of deforestation probability in 2015
- Future forest cover in 2050, 2100





Asia

- 11 countries in tropical Asia
- Including MMR, THA, KHM, LAO, VNM (ReCaREDD focus countries)
- Ex. Vietnam in 2050 (half current deforestation rate)

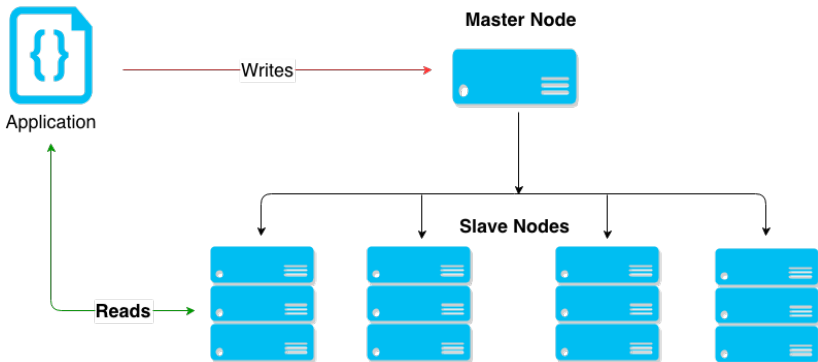


- 1 Deforestation and demography in Africa
 - Model
 - Results
 - Valorisation
- 2 `forestatrisk` Python module
 - Functionalities
 - Improvements
 - Model performance

- 3 Forecasting spatial deforestation spatially
 - Pantropical scale
 - **Computational challenge**
 - Scenario choice
- 4 Perspectives

Computational challenge

- Use of Google Cloud Computing (\neq GEE)
- Cluster of small machines with some cores
- Parallelization : one country per machine



- 1 Deforestation and demography in Africa
 - Model
 - Results
 - Valorisation
- 2 `forestatrisk` Python module
 - Functionalities
 - Improvements
 - Model performance

- 3 Forecasting spatial deforestation spatially
 - Pantropical scale
 - Computational challenge
 - Scenario choice
- 4 Perspectives


Scenario choice

- “business-as-usual”
- demographic growth for African country
- mitigation scenario (50% deforestation)

- 1 Deforestation and demography in Africa
 - Model
 - Results
 - Valorisation
- 2 `forestatrisk` Python module
 - Functionalities
 - Improvements
 - Model performance
- 3 Forecasting spatial deforestation spatially
 - Pantropical scale
 - Computational challenge
 - Scenario choice
- 4 Perspectives

Perspectives

1. Deforestation-demography study
 - consolidate the results
 - publish a first paper
2. `forestatrisk` Python module
 - polish the code
 - publish a methodological paper advocating our model choice
3. Pantropical map
 - re-run computation with new version of the model
 - extend projections to the pantropical world
 - produce maps for alternative scenario of intensity



... Thank you for attention ...