

Nouveaux arrivants

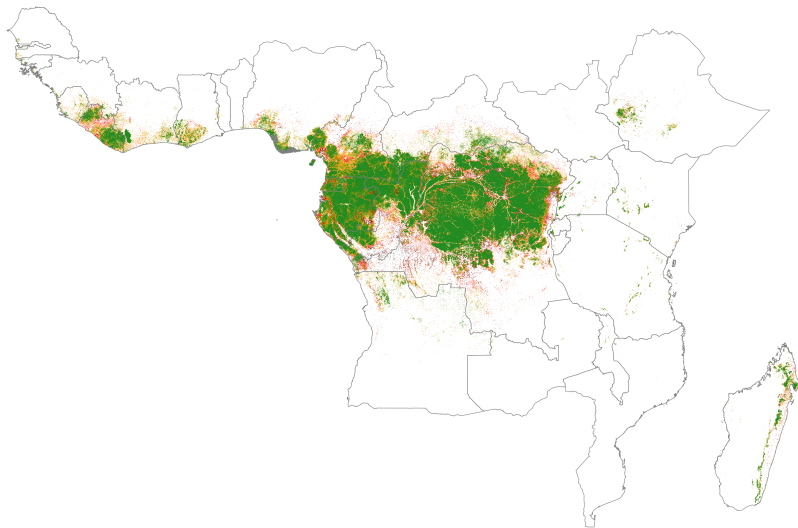


Ghislain Vieilledent

Cirad UMR AMAP



Modélisation de la Déforestation en Zone Tropicale



Modèles Jointes de Distribution des Espèces

jSDM 0.1.0



Get started

Reference

Articles ▾

Change log



jSDM R Package

Package for fitting joint species distribution models (jSDM) in a hierarchical Bayesian framework (Warton *et al.* 2015). The Gibbs sampler is written in C++. It uses Rcpp, Armadillo and GSL to maximize computation efficiency.

System requirements

Make sure the GNU Scientific Library (GSL) is installed on your system.

Installation

Install the latest stable version of **jSDM** from [CRAN](#) with:

```
install.packages("jSDM")
```

Or install the development version of **jSDM** from [GitHub](#) with:

```
devtools::install_github("ghislainv/jSDM")
```



Links

Browse source code at
<https://github.com/ghislainv/jSDM>

Report a bug at
<https://github.com/ghislainv/jSDM/issues>

License

GPL-3 | [file LICENSE](#)

Developers

Ghislain Vieilledent
Author, maintainer

Jeanne Clément
Author




Copyright holder, funder

Dev status

build passing


CRAN not published

downloads 0/month



PS-2 Bureau 215

ghislain.vieilledent@cirad.fr

 @ghislainv

<https://ecology.ghislainv.fr>